



HIGH PERFORMANCE & DEVELOPMENT

2018-2021 Plan Presentation

Performance driven, Partnership led, Athlete focused



2017 ITTF DJCC Meeting
Astana (KAZ), 15 December 2017

Today...

Introduction



1	DING Ning	CHN
2	POLCANOVA Sofia	AUT
3	CHEN Ke	CHN
4	JEON Jihee ^	KOR
5	SHAN Xiaona ^	GER
6	ZHANG Qiang	CHN
7	SUN Mingyang	CHN
8	ITO Mima	JPN
9	CHENG I-Ching	TPE
10	LI Jiayi	CHN
11	GU Yuting	CHN
12	HASHIMOTO Honoka	JPN
13	LI Fen ^	SWE
14	LI Xiaodan	CHN
15	LI Qian	POL
16	ISHIKAWA Kasumi	JPN
17	CHEN Meng	CHN
18	LEE Ho Ching	HKG
19	SOO Wai Yam Minnie	HKG
20	EKHOLM Matilda	SWE
21	SATO Hitomi	JPN
22	HU Melek	TUR
23	CHEN Xingtong	CHN
24	HIRANO Miu	JPN
25	HAN Ying ^	GER
26	KATO Miyu	JPN
27	YU Mengyu	SGP
28	HAYATA Hina	JPN
29	DOO Hoi Kem	HKG
30	YU Fu ^	POR
31	KIHARA Miyuu	JPN
32	ZHU Yuling	CHN

Country	Player (ITTF ID)	Position
	ZHU Yuling (117332)	1
	CHEN Meng (112019)	2
	DING Ning (102265)	3
	LIU Shiwen (105482)	4
	ISHIKAWA Kasumi (110752)	5
	HIRANO Miu (117820)	6
	SUN Yingsha (131163)	7
	WANG Manyu (121411)	8
	ITO Mima (117821)	9
	CHEN Xingtong (121403)	10
	FENG Tianwei (102712)	11
	CHENG I-Ching (110797)	12
	HAN Ying ^ (118762)	13
	SATO Hitomi (122261)	14
	HAYATA Hina (123672)	14
	WU Yang (110726)	16
	GU Yuting (115760)	17
	KATO Miyu (117822)	18
	DOO Hoi Kem (115543)	19
	JEON Jihee ^ (118994)	20
	HASHIMOTO Honoka (133000)	21
	MU Zi (111601)	
	SUH Hyeonwon (108470)	22
	LI Jie (111772)	23
	KIM Song I (115781)	24
	LEE Ho Ching (105159)	25
	CHEN Szu-Yu (114105)	26
	SHAN Xiaona ^ (111849)	27
	SHIBATA Saki (123848)	28
	FENG Yalan (102714)	29
	SAMARA Elizabeta (108226)	30
	CHEN Ke (119789)	30

MEN		
1	OVTCHAROV Dimitrii	GER
2	BOLL Timo	GER
3	FAN Zhenhong	CHN
4	LIN Gaoyuan	CHN
5	XU Xin	CHN
6	HARIMOTO Tomokazu	JPN
7	GAUZY Simon	FRA
8	SAMSONOV Vladimir	BLR
9	MATSUDAIRA Kenta	JPN
10	FANG Bo	CHN
11	NIWA Koki	JPN
12	WONG Chun Ting	HKG
13	YOSHIDA Masaki	JPN
14	OSHIMA Yuya	JPN
15	CHUANG Chih-Yuan	TPE
16	GERASSIMENKO Kirill	KAZ



WOMEN		
1	CHEN Meng	CHN
2	WANG Manyu	CHN
3	ISHIKAWA Kasumi	JPN
4	ITO Mima	JPN
5	GU Yuting	CHN
6	CHEN Xingtong	CHN
7	ZHU Yuling	CHN
8	FENG Tianwei	SGP
9	MORI Sakura	JPN
10	SHAN Xiaona	GER
11	HAYATA Hina	JPN
12	HIRANO Miu	JPN
13	HAN Ying	GER
14	DOO Hoi Kem	HKG
15	SATO Hitomi	JPN
16	CHENG I-Ching	TPE



Which is the hall of the World Junior Championships?



Manuals from 2004 and 2005
Course conductors paid USD\$100/day



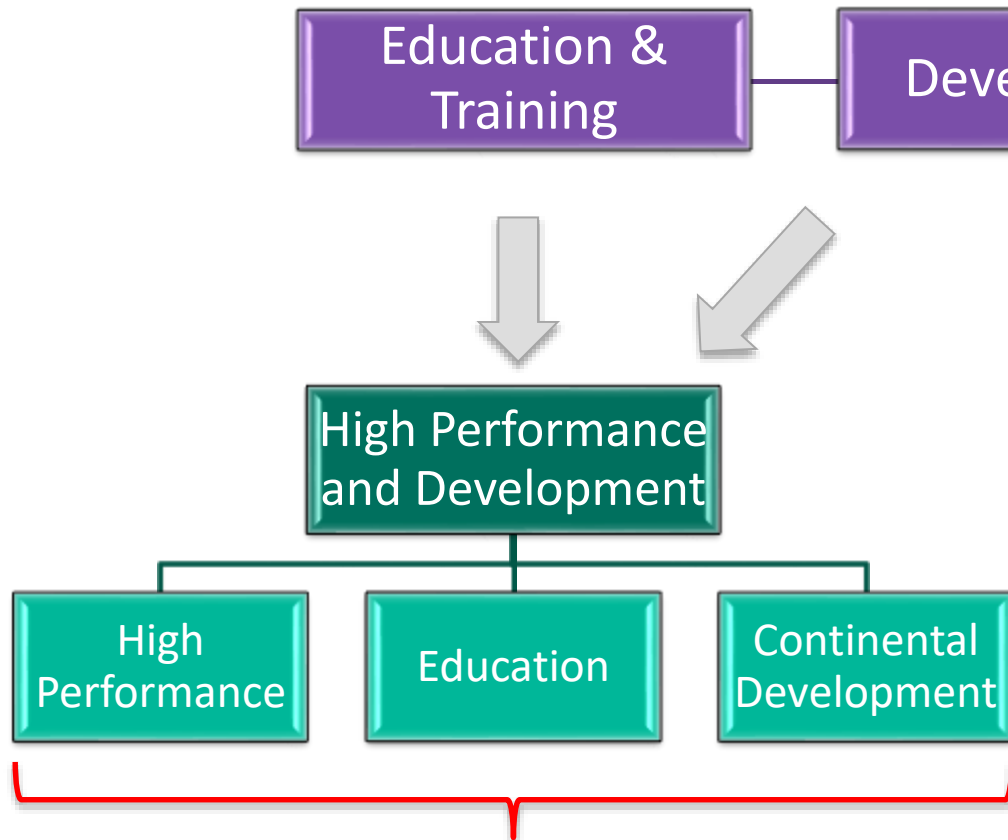
HIGH PERFORMANCE
=
ROAD TO EXCELLENCE



High Performance IS NOT a Program nor a Department, but rather the organization's philosophy, a concept and model!

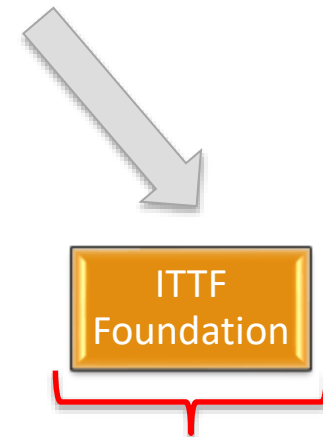
**Excellence IS NOT a skill;
it is an ATTITUDE and
it is to be found in DETAILS.**

New STRUCTURE



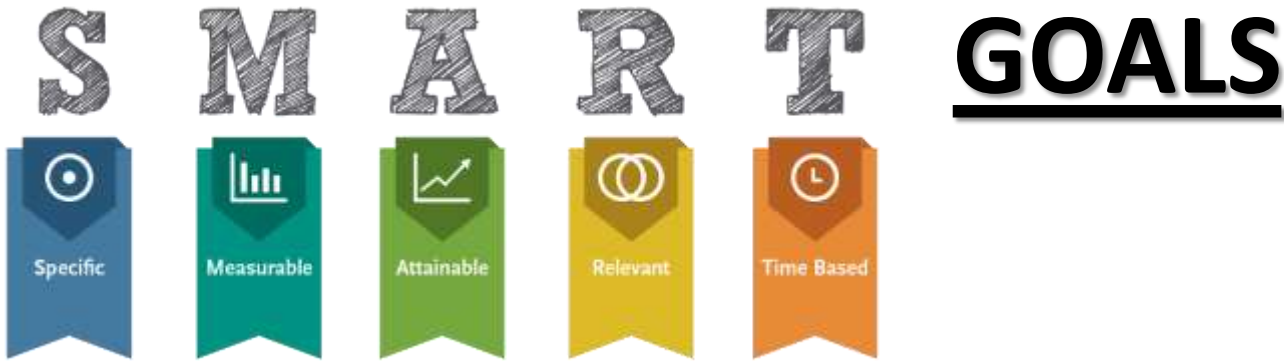
DEVELOPMENT OF Sport

ITTF to provide the best conditions and effective tools because



SPORT FOR Development

CSR; Social, Humanitarian and Sport for All projects



1. TRAIN MORE, BETTER and SMARTER

ITTF Centers – Centers of Excellence & Development Centers

2. LEARN FROM and WORK WITH THE BEST

Cooperation with China („Road and Belt Initiative“), Japan etc.

3. BUILD RELATIONS WITH RELEVANT STAKEHOLDERS

CFs, NAs, Institutes, Academic partners, Manufacturers, Leagues

4. Be CREATIVE and INNOVATIVE, be BOLD

One Goal – One Team

5. New approach to TALENT IDENTIFICATION, SELECTION and DEVELOPMENT

Education & Quality Approach

How?

New Vision and Strategy



Ultimate objectives:

- ✓ ***Diversified medal roaster*** at big events
- ✓ Establishment of an ***educational culture***
- ✓ ***Needs based program of support*** for NAs and CFs
- ✓ ***Return on investment***

Tools and guiding principles:

- ✓ Strong ***High Performance*** orientation
- ✓ ***ITTF Centers of Excellence*** and (Continental) ***Development Center***
- ✓ ***SMART goals and innovative approaches*** for a holistic and sustainable development, growth and popularization of the sport
- ✓ ***Cooperation*** (internal) and ***partnerships*** (external)
- ✓ Introduction of ***Key Performance Indicators***
- ✓ Continuous ***capacity building*** of all profiles of stakeholders

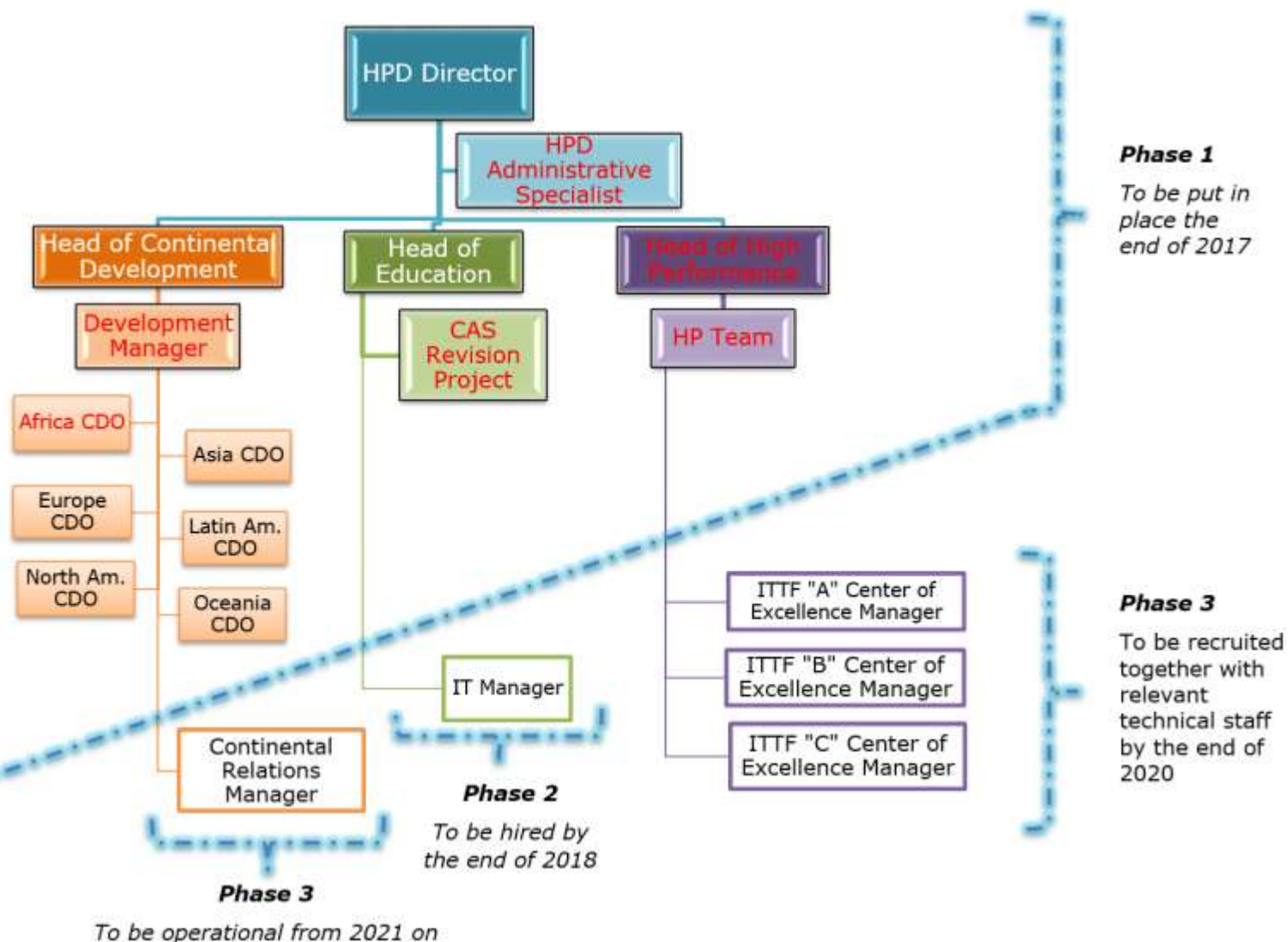
When?

HPD Roadmap

Unit	Area	Phase 1 2017-2018	Phase 2 2019-2020	Phase 3 2021-2025	Phase 4 2026→
High Performance	Talent Identification, Selection and Development	<ul style="list-style-type: none"> - Revision & optimization of current Programs (Hopes, Rough Diamonds, WFIM scholarships) - NAs with most talented players participate at global activities 	First selection of players for Centers	Continental and targeted national talent ID programs fully developed	Further improvement of the program.
	ITTF Centers of Excellence	Concept and basic documents for 3-4 initial Centers	Centers become operational, first with activities and later with permanently based players	Centers produce annually players that are WRL top 20; first medal contenders at World or Olympic title events	First podium appearances at the World and Olympic title events from ITTF centers.
Continental Development	Continental Agreements of Understanding	AoUs Revision & optimization	<ul style="list-style-type: none"> - Signature of new AoUs - Equipment donations moved to ITTF Foundation 	Integrate the Continental Development AoUs with other Continental Agreements (Marketing, Commercialisation, etc.)	Have Continental Offices established alongside the Centre of Excellence's
	Categorization of NAs	Understanding the level in which each National Association would fall, following a set of criteria		Re-assess the categorization on a quadrennial basis	Provide an annual fixed amount of support to all National Associations in certain levels to ensure local activities at a minimum can be implemented
Education	Maintain and develop educational strategy and technological tools	<ul style="list-style-type: none"> - Identify educational needs across ITTF and develop implementation strategy - Upgrade Knowledge Base to 1500 posts - Online interactive lectures and educational videos are published weekly 	Completion of all educational modules	Update of educational content and delivery methods	
	Coach Accreditation Scheme (CAS)	Revision of the CAS	Implementation of revised CAS		
	Other Coach Education	<ul style="list-style-type: none"> - Panel of experts that regularly contribute to the content; - 2nd series of the Spins n' Skills coaching videos 			
	Education of Officials and Other Stakeholders	Online courses for Umpires & Referees, Anti-Doping, Administration and Athletes education	Online courses for Competition Managers, Marketing		

Who?

Organizational Chart



What has been done so far

✓ **Human Resources:**

- ✓ **3 positions advertised** – Development Manager, Africa DM, Administrative Specialist
- ✓ **Head of High Performance** position – to be advertised by 31 December
- ✓ **Coach Accreditation Revision project** – Tender to be released by 31 December
- ✓ Preliminary conversations with „**High Performance Team**“ candidates

✓ **Partnership Building:**

- ✓ **Centers of Excellence:** Initial discussions with partners to establish a „Research and Training center of Excellence“; 15 million worth project; realization in 2 years
- ✓ Mapping of **cooperation with China** – „Silk Road“ project, Coach Education etc.

✓ **Athlete Development Model:**

- ✓ **Optimization of current Programs** – Hopes (U12), Rough Diamonds (U15), YOG candidates (U18) + introduction of OG candidates (U21)
- ✓ Internal brainstorming for **mainstreaming and overall acceleration** – events revamp, WRL etc.

Thank you for your support and attention!

Because only the best (possible)
is good enough...



ITTF.com

The **"ITTF High Performance and Development 2018-2021 Plan & 2026 Vision"** was prepared by:
Polona Cehovin – ITTF Education & Training Director
Michael Brown – ITTF & Africa-Oceania Development Co-ordinator
Dejan Papic – ITTF Education & Training Co-ordinator