



TECHNICAL REQUIREMENTS FOR WTT EVENTS AND SERVICE DESCRIPTIONS

REQUIREMENTS

PRODUCTION LEVEL

WORKING AREA

CAMERA POSITION & STANDS

INTERNET CONNECTION

CABLING

FLOOR PLAN

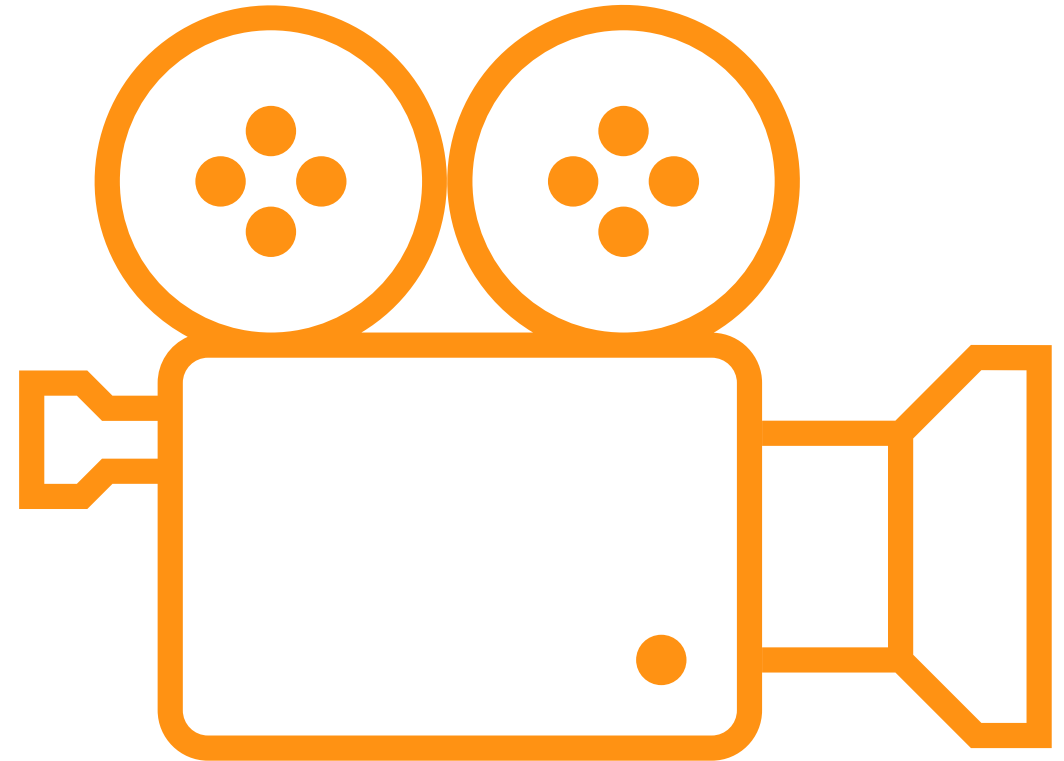
TIMELINE



PRODUCTION LEVEL

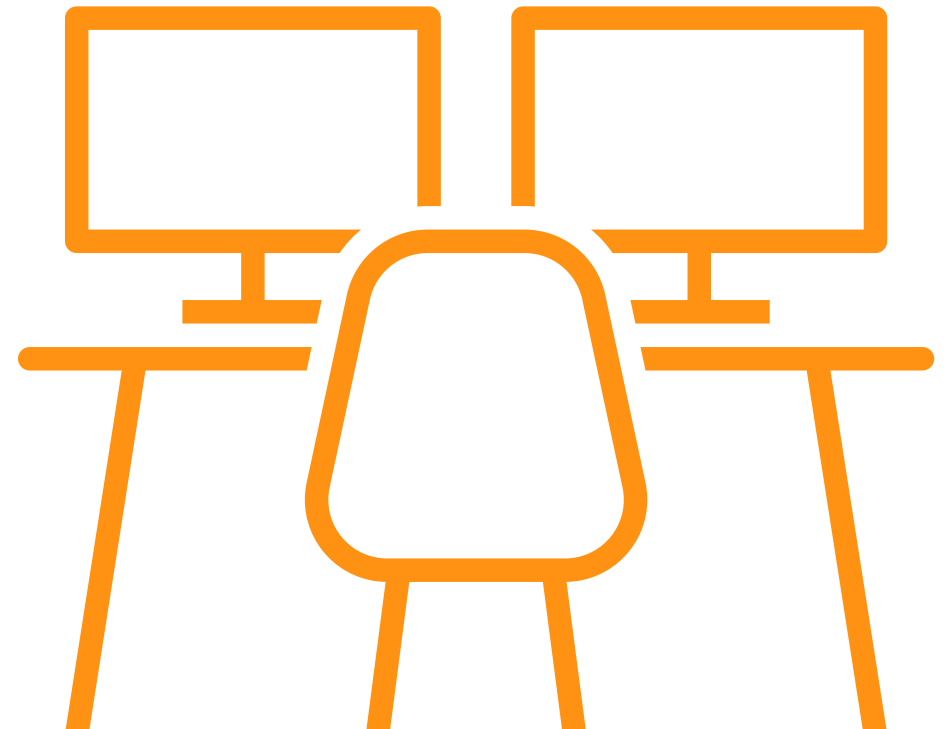
WTT World Championship.

- Table 1 – 2 | Host production
- Table 3 – 4 | 3 cam production
- Table 5 – 8 | 1 cam production



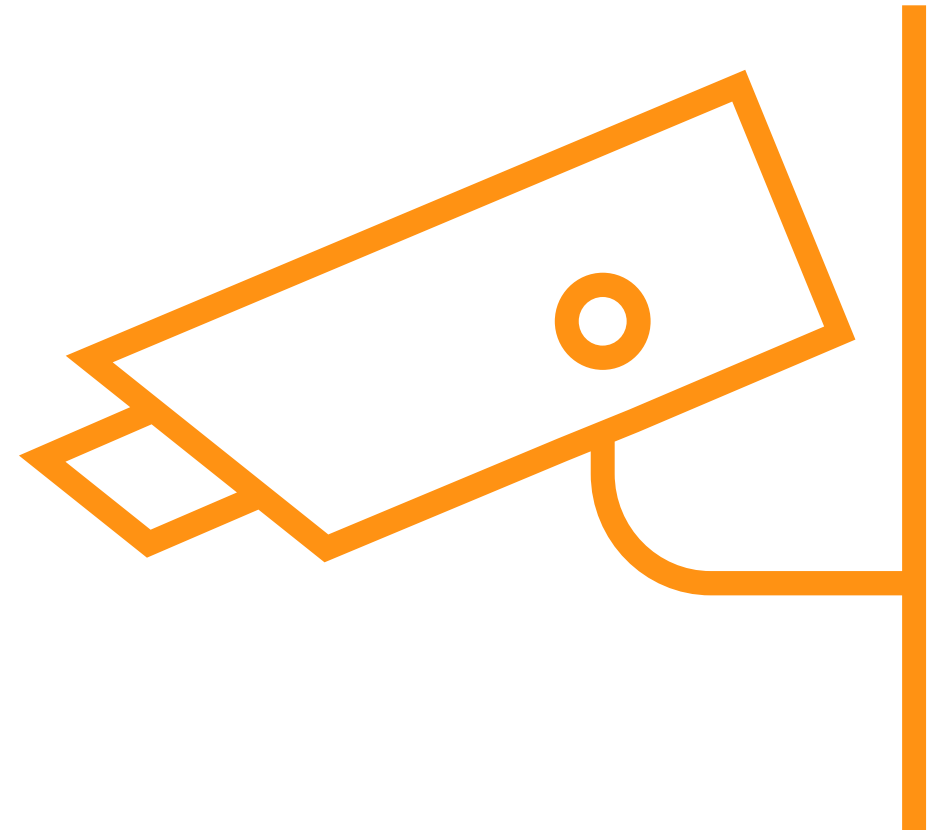
WORKING AREA

- Our production crew requires a primary production space as close as possible to the **match tables**
- Please take into consideration, our crew's working space should be located near **FOP** with clear view of the Tables.
- This working space should be furnished with 5/6 desks and have access to both a power supply and a **dedicated internet connection**
- Power Requirements: **1kW, 230V, 6 Amps**, Power Outlets needed: **6-7**

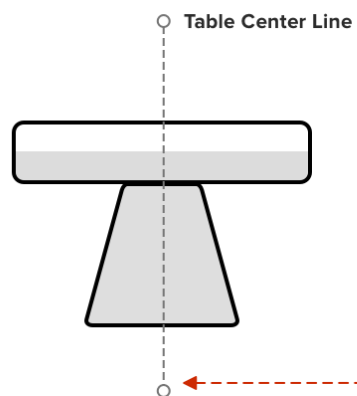
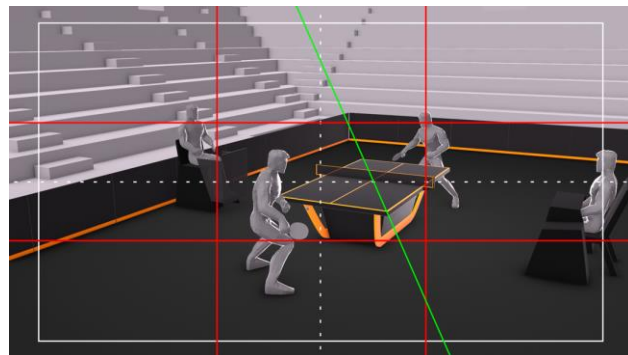
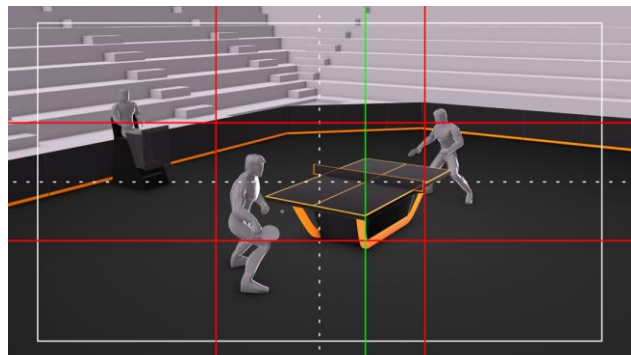


CAMERA POSITION

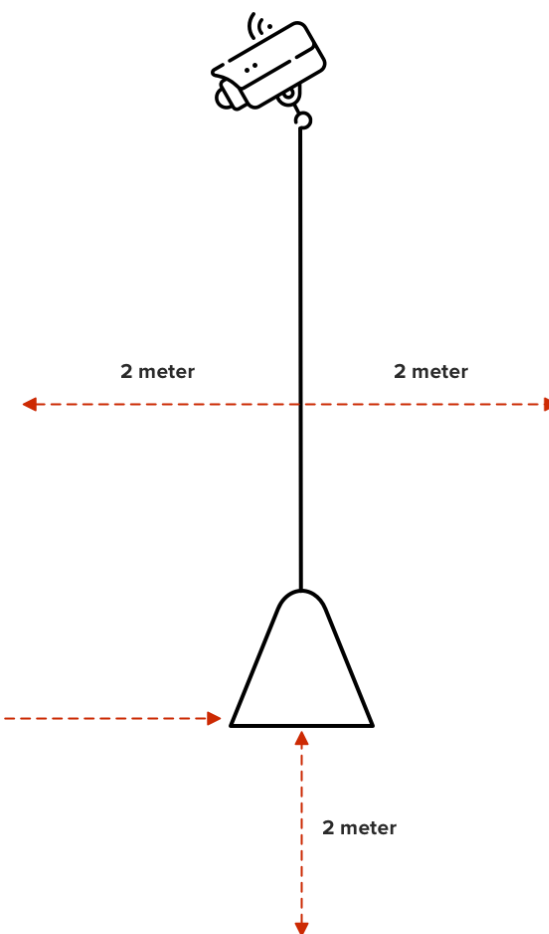
- All of these are provided by the **Local organizing community** unless **specified** by IMG Arena
- All cameras will be raised on **C-Stand** or **Duratruss** to the designated height to achieve the desired angle shot
- A direct unobstructed view of match action from the **camera position POV** corner of the table
- Height of **Camera Lens 1 – 3.0 meters. Camera Lens 2 and 3 – 1.8 meters**
- Provision of **power supply** near **all** camera locations of **200W, 230V, 1Amps**



CAMERA POSITION

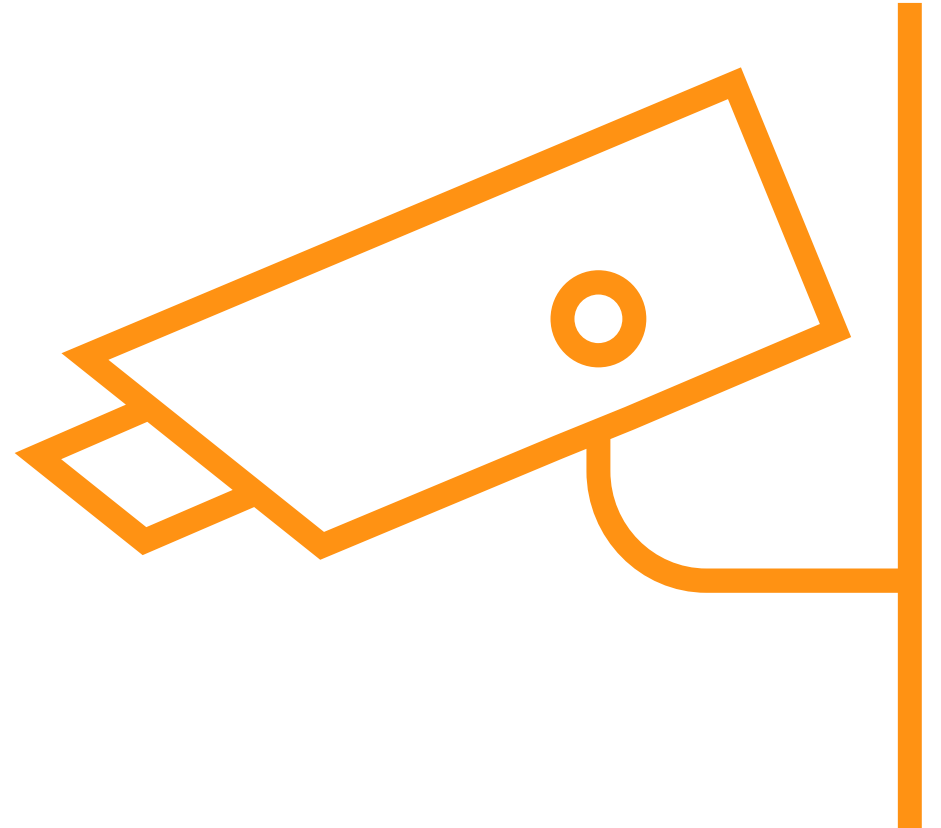


9.3 m from Center of Table

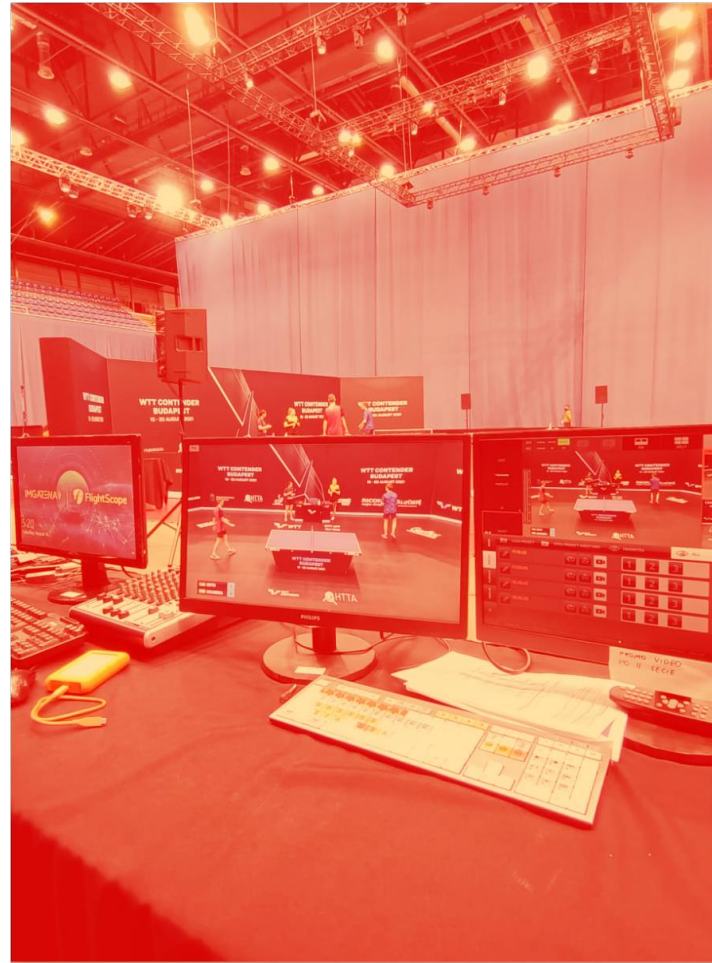


CAMERA STANDS

- We will need 10 **C-Stand** or **Duratruss**



DURING THE TOURNAMENT



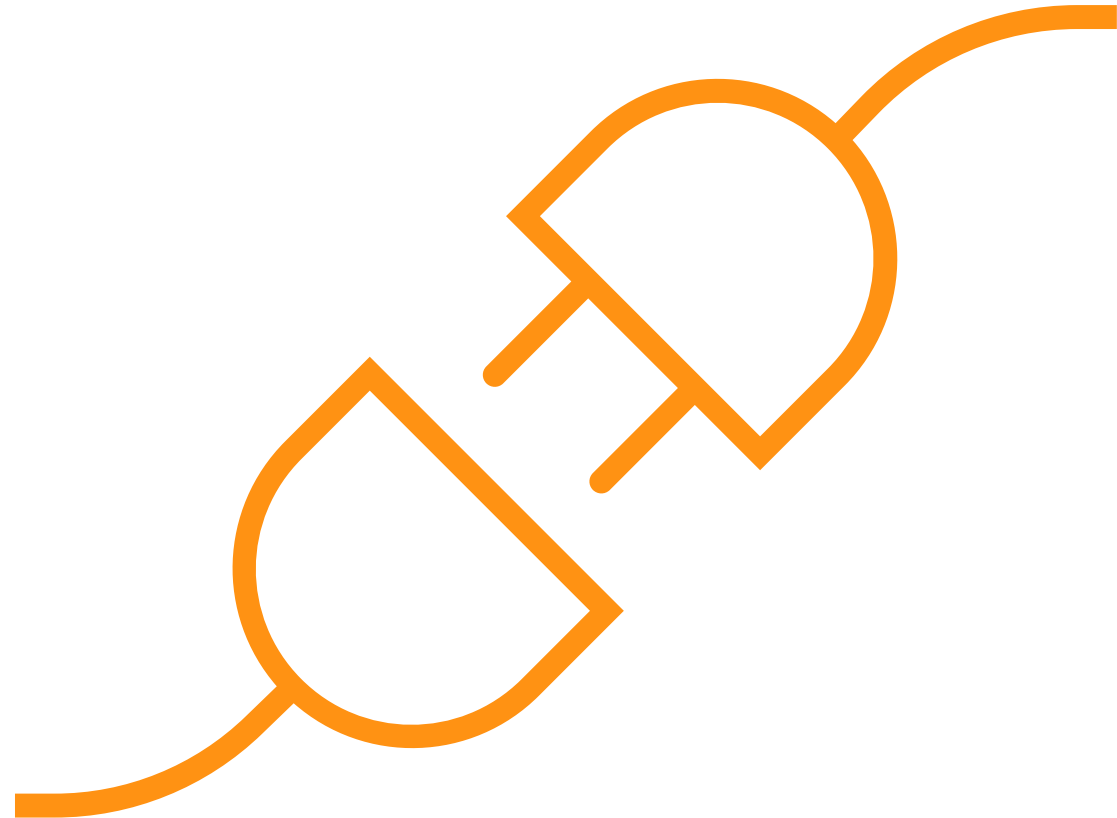
INTERNET CONNECTION

- In order to ensure optimum streaming standards, IMG ARENA will require access to a **hardwired internet connection** in the production office. We will require an **international internet connection**
- 2nd **Internet line** to be used as a contingency plan
- Bandwidth minimum speeds per table, numbers are as follows:
 - 1 Table** - 22Mb of upload speed
 - 2 Tables** - 45Mb of upload speed
 - 3 Tables** - 67Mb of upload speed
 - 4 Tables** - 100Mb of upload speed
 - 5 Tables** - 125Mb of upload speed
 - 6 Tables** - 150Mb of upload speed



CABLING REQUIREMENTS

- Will require **cat5e** cables, depending on the venue size
- IMG Arena requires to have prepared only the **power outlets** (camera locations, production office) and internet connection in the production office, prior to the team's arrival



FLOOR PLAN

- Floor plan of the **venue**
- To indicate our **working area** and **camera** locations
- Location of **Host Broadcasting** setup
- Photos of the **venue**



TIMELINE REQUIREMENTS

- The IMG Arena team usually arrives **5 days prior** to the start of the tournament depending on the event
- **First** day is arriving to the hotel
- **Rest** of the days are for setting up and testing



CONTACT

If you have any questions relating to implementation or require further information or guidance about anything in this document, please contact:

PARIS VARVIAS

Sports Operations Executive
+41 764 649 633
paris.varvias@imgarena.com

JANUSZ KRZOK

Senior Operations Manager
+48 507 107 143
janusz.krzok@imgarena.com

BARTŁOMIEJ GRZESIK

WTT / ITTF Operations Coordinator
+48 882 355 955
bartlomiej.grzesik@imgarena.com

IMGARENA

THANK YOU

www.imgarena.com